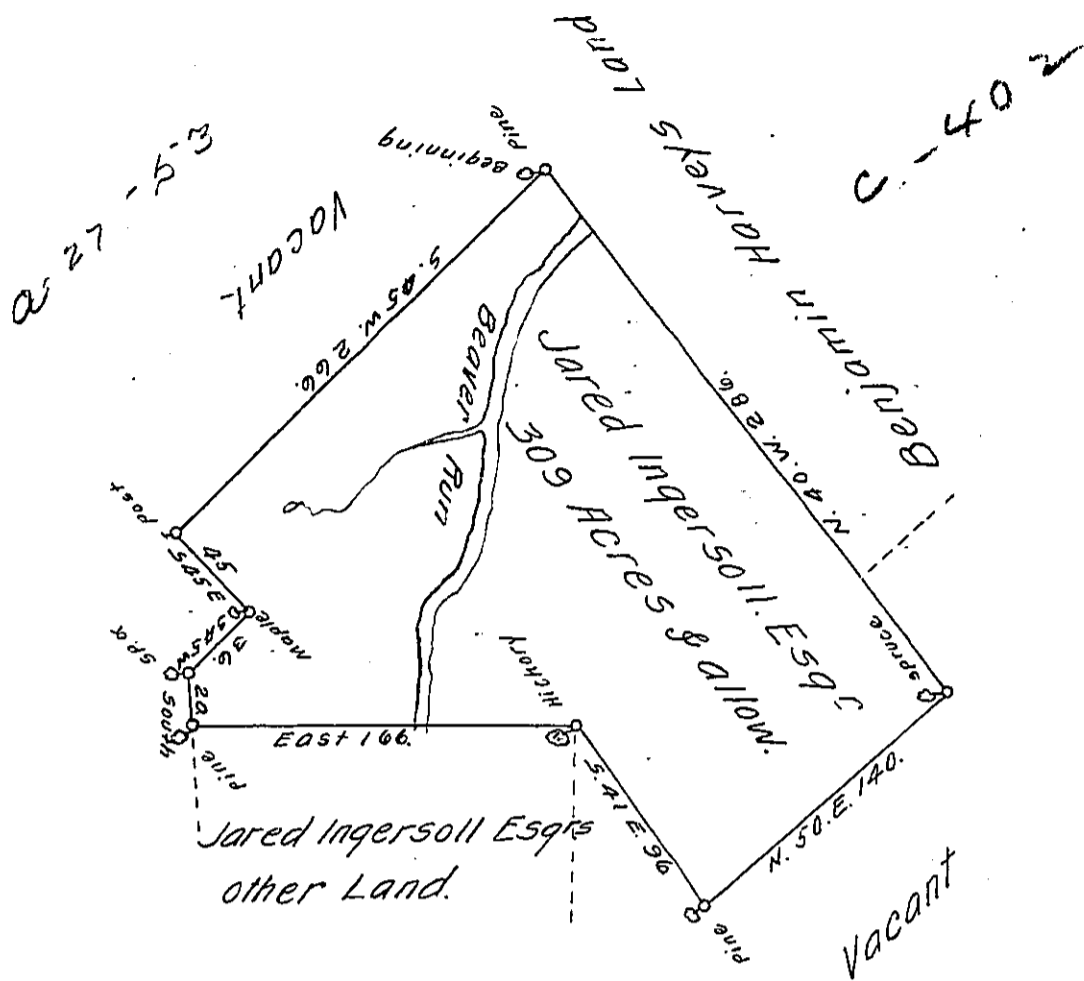


FORM NO. 1.

N^o 521.



A Draught of a tract ^{of land} situate on Beaver Run a branch of Sandy-lick Creek in the County of Northumberland. containing 309 Acres and allowance - Surveyed the 28th day of July 1785. for Jared Ingersoll Esquire, in pursuance of a Warrant N^o 521 bearing date at Philad^a the 17th day of May 1785.

To John Lukens Esq^r }
 Surveyor General. }

Richard Sherer -

IN TESTIMONY that the above is a copy of the original remaining on file in the Department of Internal Affairs of Pennsylvania, made conformably to an Act of Assembly approved the 16th day of February, 1833, I have hereunto set my Hand and caused the Seal of said Department to be affixed at Harrisburg, this twenty ninth day of November 1911.

Henry Houck
 Secretary of Internal Affairs.